

See back page
for detail of toy



Sweater and Sailor Toy

Measurements

To fit age, approx
1-2 2-3 4-5 6-7 years

To fit chest
51 56 61 66 cm
20 22 24 26 in

Actual size
58 64 71 76 cm
23 25 28 30 in

Finished length, approx
29 33 38 42 cm
11 1/2 13 15 16 1/2 in

Sleeve, measured down centre
20 26 30 34 cm
8 10 12 13 1/2 in

Quantities

Patons Knit 'n' Save DK

Main Shade (7843)				
2	2	3	3	100 gram balls
1st Contrast (7813)				
1	1	1	1	25 gram ball
2nd Contrast (7823)				
1	1	1	1	25 gram ball
3rd Contrast (7799)				
1	1	1	1	25 gram ball
4th Contrast (7817)				
1	1	1	1	25 gram ball
5th Contrast (7915)				
1	1	1	1	25 gram ball

Quantities of yarn are approximate as they are based on average requirements.
Check actual yarn colour - as printing may not match yarn exactly.

We recommend Patons yarn bobs for tangle free motif knitting.

Pair each Patons 3 1/4 mm (UK 10/USA 3) and 4 mm (UK 8/USA 6) needles. 4 buttons. Good quality washable stuffing.

Tension

22 sts and 30 rows to 10 cm (stocking st) on 4 mm needles or size needed to achieve stated tension.

It is important to check your tension before starting your garment. If there are too many stitches to 10 cm, your tension is tight and you should change to a larger size needle. If there are too few, your tension is loose and you should change to a smaller size needle.

Caution

It is essential to work to the stated tension, and we cannot accept responsibility for the finished product if any yarn other than the specified yarn is used.

Abbreviations

K=knit; P=purl; st=stitch; stocking st=1 row K, 1 row P; garter st=every row K; tog=together; tbl=through back of loops; inc=increase by working into front and back of st; dec=decrease by working 2 sts together; beg=beginning; alt=alternate; rep=repeat; cont=continue; meas=measures; foll=following; rem=remain(ing); RS=right side; WS=wrong side;

cm=centimetres; in=inches; mm=millimetres; sL1K=slip 1 knitways; yfwd=yarn forward; psso=pass slip st over; patt=pattern; 0=no st, row or time to be worked in this size; M1=make a st by picking up horizontal loop lying before next st and working into back of it; MS=Main Shade; 1st C=1st Contrast; 2nd C=2nd Contrast; 3rd C=3rd Contrast; 4th C=4th Contrast; 5th C=5th Contrast.

U.S.A. Glossary

Cast off=bind off; tension=gauge; knit up=pick up and knit; stocking st=stockinette st; yarn forward, yarn over needle or yarn round needle=yarn over.

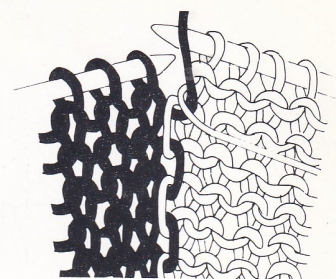
Instructions are given for the first size, with larger size(s) given in square brackets []. Where only one figure is given this applies to both (all) sizes.

Before starting to knit, read the instructions carefully and circle all figures relating to your size with a coloured pencil.

Note

When working from chart, do not carry colours across wrong side of work, but use separate balls as required, twisting yarns when changing colour to avoid a hole (see diagram).

Read odd rows K from right to left and even rows P from left to right.



SWEATER

POCKET LINING

With 4 mm needles and MS, cast on 16 sts and starting with a K row, work in stocking st for 18 rows, thus ending with RS facing. Leave these sts on a spare needle.

FRONT

**With 3 1/4 mm needles and MS, cast on 63 [69, 77, 83] sts.

Rib row 1 - (RS), K1, *P1, K1; rep from * to end.

Rib row 2 - P1, *K1, P1; rep from * to end.

Rep these 2 rows for 4 [4, 5, 5] cm, ending with row 1.

Next row - In rib inc 1 st at centre (64 [70, 78, 84] sts).**

Change to 4 mm needles and starting with a K row, work in stocking st for 6 rows, thus ending with RS facing for next row.

Joining in and breaking off colours as required, patt from chart until row 10 has been worked, thus ending with RS facing for next row.

Place Pocket Lining

Next row - Patt 11 [14, 18, 21], slip next 16 sts on a spare needle and instead patt across 16 sts of Pocket Lining, patt 37 [40, 44, 47].

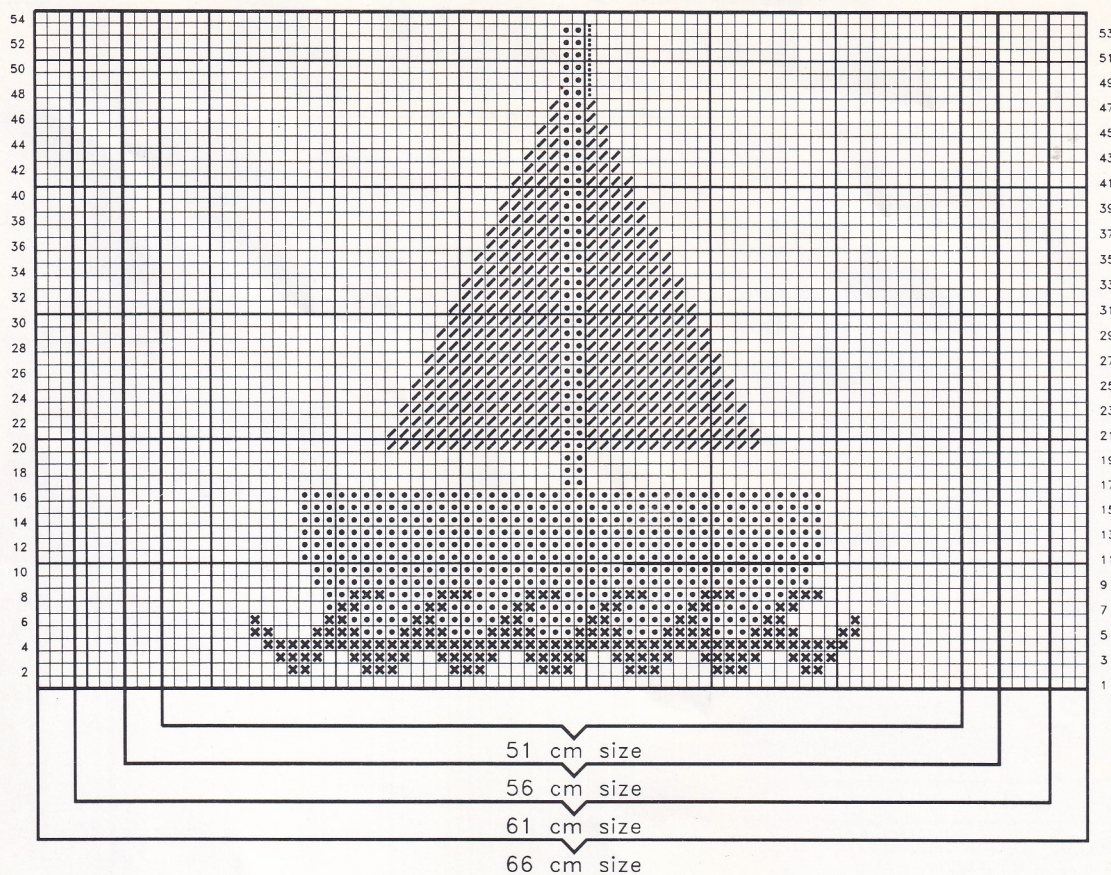
Cont in patt from chart until row 54 has been worked, thus ending with RS facing for next row. Break Contrasts.

Cont in MS **only**, and starting with a K row, work in stocking st for 0 [12, 24, 34] rows, thus ending with RS facing for next row.

Shape neck

Next row - K27 [29, 33, 36], turn and work this side first. Dec 1 st at neck edge on every row until 21 [23, 27, 29] sts rem. Work 1 [1, 1, 2] rows, thus ending with RS facing. Cast off.

With RS facing, slip centre 10 [12, 12, 12] sts on a spare needle, rejoin MS to rem sts, K to end (27 [29, 33, 36] sts). Dec 1 st at neck edge on every row until 21 [23, 27, 29] sts rem. Work 10 [10, 10, 11] rows, thus ending with WS facing. Cast off.



KEY

- = MS
 x = 1st C
 □ = 2nd C
 □ = 3rd C
- = Sew on Flag

BACK

Work as Front from ** to **.

Change to 4 mm needles and starting with a K row, work in stocking st for 76 [88, 100, 112] rows, thus ending with RS facing for next row.

Shape shoulders

Cast off 21 [23, 27, 29] sts at beg of next 2 rows. Leave rem 22 [24, 24, 26] sts on a spare needle.

SLEEVES

With 3 1/4 mm needles and MS, cast on 37 [39, 41, 45] sts and work in rib as on Front for 4 [4, 5, 5] cm, ending with row 1.

Increase row - Rib 2 [3, 4, 2], *M1 (by picking up horizontal loop lying before next st and working into back of it), rib 4; rep from * to last 3 [4, 5, 3] sts, M1, rib to end (46 [48, 50, 56] sts).

Change to 4 mm needles and starting with a K row, work in stocking st, shaping sides by inc 1 st at each end of 7th [9th, 9th, 11th] and every foll 6th [8th, 8th, 10th] row until there are 58 [62, 66, 64] sts.

66 cm size: Inc 1 st at each end of every foll 12th row from previous inc until there are 70 sts.

All sizes: Work straight until Sleeve meas 20 [26, 30, 34] cm, ending with RS facing. Cast off **loosely**.

MAKE UP

Omitting ribbing, press lightly under a **dry** cloth using a cool iron.

Flag

With 3 1/4 mm needles and 1st C, cast on 7 sts and **noting** that first row is WS, work in garter st for 7 rows, thus ending with RS facing for next row.

Next row - sL1K, K1, psso, K3, K2tog (5 sts).

Next row - K.

Next row - sL1K, K1, psso, K1, K2tog (3 sts).

Next row - K.

Next row - sL1K, K2tog, psso and fasten off.

Sew cast-on edge of Flag to Front of Sweater, as indicated on chart.

Pocket Top

With RS facing, 3 1/4 mm needles and 2nd C, K across 16 pocket sts.

Increase row - P2, (M1, P3) 4 times, M1, P2 (21 sts).

Starting with row 2, work in rib as on Front for 6 rows, thus ending with RS facing. Cast

off in rib.

Catch down sides of Pocket Top and Pocket Lining.

Join right shoulder seam.

Neck Border

With RS facing, 3 1/4 mm needles and MS, **knit up** 8 [8, 8, 10] sts down left side of neck, K10 [12, 12, 12] from front, **knit up** 16 [16, 16, 18] sts up right side of neck, then K22 [24, 24, 26] from back inc 1 st at centre (57 [61, 61, 67] sts).

Starting with row 2, work in rib as on Front for 7 rows, thus ending with RS facing. Cast off in rib.

Buttonhole Border

With RS facing, 3 1/4 mm needles and MS, starting at side edge of left front shoulder, **knit up** 31 [33, 37, 39] sts to top of Neck Border.

Starting with row 2, work in rib as on Front for 3 rows.

Next row - (Buttonhole row), rib 3 [4, 4, 4], *cast off 2, rib 6 [6, 7, 8] (including st left on needle after cast off); rep from * twice more, cast off 2, rib to end.

Next row - In rib, casting on 2 over those cast off.

Work in rib for 2 rows, thus ending with RS facing. Cast off in rib.

Button Border

With RS facing, 3 1/4 mm needles and MS, starting at top of Neck Border on left back shoulder, **knit up** 31 [33, 37, 39] sts to side edge.

Starting with row 2, work in rib as on Front for 7 rows, thus ending with RS facing. Cast off in rib.

Place Buttonhole Border over Button Border and lightly stitch together at side edge.

Place centre of cast-off edge of sleeves to shoulder seams and sew Sleeves in place to Front and Back. Join side and sleeve seams.

Sew on buttons.

Do not dry handknits in harsh sunlight as fading or yellowing may occur. Do not tumble dry.

SAILOR TOY

LEGS, BODY AND HEAD

With 3 1/4 mm needles and 1st C, cast on 14 sts, placing a marker at centre.

Row 1 - (WS), P.

Row 2 - K, inc in every st to end (28 sts).

Starting with a P row, work in stocking st for 3 rows, thus ending with RS facing for next row.

Shape feet

Next row - (RS), K2, (K3tog) 3 times, K6, (K3tog) 3 times, K2 (16 sts).

Work in stocking st for 7 rows, placing a marker at centre of last row, thus ending with RS facing for next row.

Work in stocking st for a further 10 rows, thus ending with RS facing for next row. Break 1st C.

Join in 5th C and work in stocking st for 2 rows.

Shape neck

Next row - (RS), K3, K2tog, K6, K2tog, K3 (14 sts).

Work in stocking st for 9 rows, thus ending with RS facing for next row.

Next row - *K2tog; rep from * to end (7 sts).

Next row - P.

Break yarn, thread through rem sts, pull tightly and fasten off securely.

MAKE UP

Do not press.

Arms (make 2)

With 3 1/4 mm needles and 5th C, cast on 3 sts.

Row 1 - (RS), K, inc in every st to end (6 sts).

Row 2 - P.

Break 5th C. Join in 1st C and starting with a K row, work in stocking st for 8 rows, thus ending with RS facing. Cast off.

In 4th C, work a row of back stitch around each cuff, around top of feet and across centre of Sailor, 4 rows above second marker, as in photograph.

Join back seam of Sailor and stuff firmly. Join cast-on edges, matching marked st to back seam. Using 1st C, work a tight running stitch through centre of toy between markers to form legs.

Thread a piece of 5th C around neck shaping, pull in tightly and fasten off securely.

Join arm seams. Stuff arms firmly and pin together at top. Sew arms to each side of body.

Collar

With 4 mm needles and 4th C, cast on 10 sts and starting with a K row, work in stocking st for 4 rows, thus ending with RS facing for next row.

Next row - (RS), K3, cast off 4, K3 (including st left on needle after cast-off).

Cont on last 3 sts only, work in stocking st for 7 rows, thus ending with RS facing for next row.

Next row - K1, K2tog (2 sts).

Next row - P.

Next row - K2tog and fasten off.

With WS facing, rejoin 4th C to rem 3 sts and work in stocking st for 7 rows, thus ending with RS facing for next row.

Next row - (RS), sL1K, K1, pssso, K1 (2 sts).

Next row - P.

Next row - sL1K, K1, pssso and fasten off.



In 1st C, work a row of back stitch along second row of Collar.

Sew Collar to toy as in photograph.

In 4th C, work 2 french knots on front of Sailor's face to form eyes. In 2nd C, embroider mouth in back stitch as in photograph.

In 3rd C, embroider hair using straight stitches, as in photograph.

Hat

With 3 1/4 mm needles and 4th C, cast on 20 sts and starting with a K row, work in stocking st for 2 rows, thus ending with RS facing for next row. Break 4th C. Join in 1st C.

Next row - (RS), *K2tog; rep from * to end (10 sts).

Next row - P.

Next row - K, inc in every st to end (20 sts).

Next row - P.

Next 3 rows - K.

Next row - P1, *P2tog, P2; rep from * to last 3 sts, P2tog, P1 (15 sts).

Next row - K1, *K2tog, K1; rep from * to last 2 sts, K2tog (10 sts).

Next row - P1, *P2tog; rep from * to last st, P1 (6 sts).

Next row - *K2tog; rep from * to end (3 sts).

Break yarn, thread through rem sts, pull tightly and fasten off securely.

Join seam. Fold out brim and press hat into shape as in photograph. Using 1st C, sew Hat to head, working stitches through all 3 thicknesses of Hat.

Do not dry handknits in harsh sunlight as fading or yellowing may occur. Do not tumble dry.



To help you keep your handknits looking their best, we recommend Dreft Automatic.



Published by

Coats Patons Crafts



We shall be pleased to deal with your queries if you write enc. a ball band of the yarn specified and a s.a.e. to Consumer Helpline, Coats Patons Crafts, McMullen Road, Darlington, Co. Durham DL1 1YQ or phone (0325) 381010. **WARNING - COPYRIGHT** All Patons patterns are protected by the law of copyright and may not be reproduced either by photocopying or any other means. They are sold on condition that they are used only for non-commercial purposes. All other rights are expressly reserved by Coats Patons Crafts.

0				1		2			3			4			5			6			7 in	
0	1	2	3	4	5	6	7	8	9	10	11	12	13	14	15	16	17	18	cm			